

迪恒
股份

DU21K

LASER PROJECTOR

天琴座系列激光工程投影机



配备电动镜头, 投射比涵盖0.56~10.8镜头, 灵活应用于各种空间 The projection ratio covers lenses ranging from 0.56 to 10.8,

配电动镜头, 支持电动位移、电动聚焦、电动变焦。可更换镜头覆盖投射比0.56/0.62/0.8/0.65-0.75/0.84-1.02/0.85-1.45/1.02-1.36/1.2-1.5/1.5-2.0/2.0-4.0/2.1-3.7/3.6-6.3/4.0-7.2/7.2-10.8;



Power distribution electric lens, supporting electric displacement, electric focusing, and electric zoom
Replaceable lens coverage projection ratio: 0.56/0.62/0.8/0.65-0.75/0.84-1.02/0.85-1.45/1.02-1.36/
1.2-1.5/1.5-2.0/2.0-4.0/2.1-3.7/3.6-6.3/4.0-7.2/7.2-10.8;

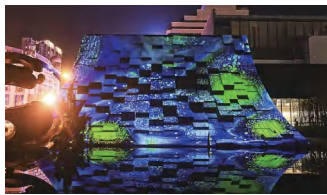
Product parameters 产品参数

天琴座系列-DU21K工程激光投影机 Lyra series-DU21K Laser Engineering Projector

型号(Model): DU21K	对比度(Contrast ratio): 5000000:1
显示芯片(Display chip): 0.96" DMD	分辨率(Resolution ratio): 1920*1200 (16:10)
投影技术(Projection technology): DLP	电压(Voltage): 110-240V (±10%)
光源寿命(Light source lifespan): 20000 hour	均匀度(Projection Ratio): ≥90%
中心亮度(Center brightness): 21000流明(lumen)	ISO亮度(ISO brightness): 20500 ISO流明
宽高比(Aspect ratio): 16:10 (兼容16:9,4:3)	边缘融合(Edge fusion): 支持 support
黑阶补偿(Black scale compensation): 支持 support	动态黑(Dynamic Black): 支持 support
亮度调节(Brightness adjustment): 支持 support (0~100)	极黑(Extremely black): 支持 support
AV Mute定时器(AV Mute Timer): 支持 support	HSG调节(HSG regulation): 支持 support
HDR: 支持 support	HDR模式(HDR mode): 明亮、标准、电影
色彩优化(Color optimization): 支持 support	Gamma调整(Gamma adjustment): 支持 support
PIP/PBP: 支持 support	信号备份(Signal backup): 支持 support
安装方式(Installation method): 2*360°	OSD多语言(OSD Multilingual): Supports 16 languages
预约排程(Appointment scheduling): 支持 support	镜头类型(Lens type): 电动镜头 Electric lens
噪音(Weight): 40 (db)	尺寸(Size): 682*650*301 (mm)
重量(Weight): 50 (kg)	
几何校正格点(Geometric correction grid points): 2*2~17*17格点 Lattice point	
主动3D(Active 3D): 支持HDMI 1.4B强制格式主动3D, 支持多台主动3D同步 Supports HDMI 1.4b forced format active 3D, supports multiple active 3D synchronization	
选配镜头(Optional lens): 0.56/0.62/0.8/0.65-0.75/0.84-1.02/0.85-1.45/1.02-1.36/1.2-1.5/1.5-2.0/ 2.0-4.0/2.1-3.7/3.6-6.3/4.0-7.2/7.2-10.8	
图像校正(keystone): 支持水平垂直梯形校正, 枕形校正, 四角调整, 几何校正 Supports horizontal and vertical trapezoidal correction, pillow shape correction, corner adjustment, and geometric correction	
激光显示技术(Laser Display Technology): 蓝色激光+荧光粉技术 Blue laser+fluorescent powder technology	
镜头位移(projection angle): 水平(level) ±25%; 垂直(vertical) ±60%	
输出接口(output interface): HDMI out x1, 3D sync out x1, 12V x1, 3G-SDI out x1	
输入接口(input): Display x1, HDMI 2.0 x2, DVI-D x1, VGA x1, HDBaseT x1, 3D sync in x1, 3G-SDI in x1	
控制接口(control interface): RS232 in x1, RS232 out x1, RJ45 x1, Wire Remote in x1, Wire Remote out x1, USB Ax1	
整机功率(power): 满载功耗(Full load power consumption) 1350W@220VAC	

Single DLP projection technology

单DLP投影技术, 搭载0.96寸DMD芯片



和3DLP投影机相比,单DLP投影机只包含一片DMD,投影机结构更简单,生产成本更低。只采用一片DMD,最明显的优点就是投影机外型小巧,投影机可以做得很紧凑,便于提升、运输和安装,这对舞台租赁和现场活动等应用很重要。

单DLP投影机更利于做光学密封,密封的光机可以有效消除灰尘或雾气的影响,可在相对恶劣的环境下不间断运行,降低投影机在使用寿命期间的维护成本。

Compared to 3DLP projectors, a single DLP projector only contains one DMD, making the projector structure simpler and production costs lower. The most obvious advantage of using only one DMD is the compact appearance of the projector, which can be easily lifted, transported, and installed. This is important for stage rental and on-site activities.

A single DLP projector is more conducive to optical sealing. Sealed optical machines can effectively eliminate the influence of dust or mist, and can operate continuously in relatively harsh environments, reducing the maintenance cost of projectors during their service life.

强大的色彩管理以及HSG调色功能 Powerful color management and HSG color matching function

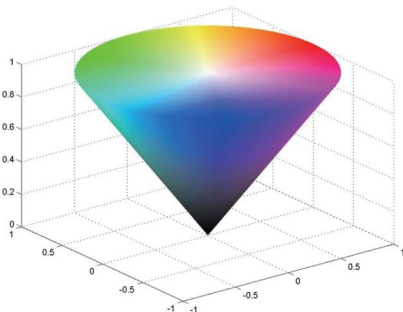
投影内置了傻瓜化操作的色温调节功能,用户可以对色彩的冷暖轻松调节,也内置了强大的HSG功能,用户可以对红色、绿色、蓝色、青色、洋红色、黄色的色相、亮度、饱和度进行精细的调节,对白色光的RGB三原色进行精细调节,进而消除多台投影机颜色表现上的差异。



调色前 Before color adjustment



调色后 After color adjustment



The projection is equipped with a foolproof color temperature adjustment function, allowing users to easily adjust the temperature of colors. It also has a powerful HSG function, allowing users to finely adjust the hue, brightness, and saturation of red, green, blue, cyan, magenta, and yellow, as well as the RGB primary colors of white light. Furthermore, eliminate the differences in color performance among multiple projectors.

信号源备份功能 Signal source backup function

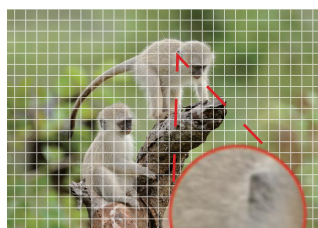
当投影机在做重要演示时,信号传输线缆发生故障,终端显示信号不输出。投影机预监测到信号终端后IC将指令传输到备用端口可立即启动应急显示。

When the projector is performing an important demonstration, the signal transmission cable fails and the terminal display signal does not output. After the projector pre-monitors the signal terminal, the IC will transmit instructions to the backup port to immediately activate the emergency display.

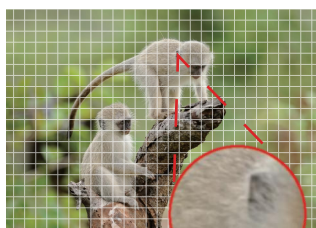


搭载HDMI 2.0接口, 支持4K@60HZ输入

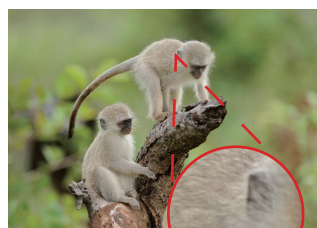
Equipped with HDMI 2.0 interface, supporting 4K@60hz input



1920*1080
1080P



3840*2160
4K



7680*4320
8K

该产品搭载了HDMI 2.0接口, 可支持3840*2160@60HZ信号的输入。该功能可以为单台投影或多台投影提供更高分辨率。该功能若搭配其他画面分割设备在前端多一次、二次分割, 最终可以提供8K乃至更高分辨率的点对点高清解决方案。

This product is equipped with HDMI 2.0 interface and can support 3840*2160@60hz Input of signals. This feature can provide higher resolution for single or multiple projectors. If this function is combined with other image segmentation devices for additional or secondary segmentation in the front-end, it can ultimately provide a point-to-point high-definition solution with 8K or even higher resolution.

HDMI级联功能, 多画面融合仅需一个信号源

Multiple image fusion only requires one signal source

具备HDMI 级联功能, 级联输出接口可以复制一份相同的HDMI IN信号作为输出。该功能可以用来做预监回显, 也可以将环出接口的连接在下一台同型号产品的输入接口的, 多台设备依次环接。

Equipped with HDMI cascading function, the cascading output interface can replicate the same HDMI IN signal as the output. This function can be used for pre monitoring echo, or to connect the outgoing interface to the input interface of the next product of the same model, with multiple devices connected in sequence.



采用远心光学架构

Adopting telecentric optical architecture

采用远心光学架构设计, 相比非远心光学架构拥有更出色的色彩均匀度, 亮度均匀度表现, 更利于大屏融合的一致性表现。

Adopting a telecentric optical architecture design, compared to non telecentric optical architectures, it has better color uniformity and brightness uniformity performance, which is more conducive to the consistency performance of large screen fusion.



支持多种图像校正模式

Supports multiple image correction modes

支持水平垂直梯形校正, 枕形校正, 四角调整, 几何校正。

Supports horizontal and vertical trapezoidal correction, pillow shape correction, corner adjustment, and geometric correction



标配RJ45、RS232接口, 支持多种控制方式

Standard RJ45、RS232 interfaces multiple control methods

产品标配了RJ45、RS232接口, 支持IR遥控、按键板控制、网口、串口等多种控制方式和多种网络控制协议(Crestron/Extron/PJ Link/AMX/Telnet)用户可根据应用环境的需求, 搭配不同的控制设备进行远程控制和集中管理。

The product comes standard with RJ45 and RS232 interfaces, supporting various control methods such as IR remote control, button board control, network port, serial port, and multiple network control protocols (Crestron/Exon/PJ Link/AMX/Telnet). Users can use different control devices for remote control and centralized management according to the needs of the application environment.

内置硬件融合以及自动平滑算法, 技术领先市场

内置纯硬件融合, 融合带宽度支持0%~50%可调节, 上下左右四边均可以设置融合。融合带宽度设置完成后, 画面会自动平滑算法, 无需在对伽马曲线做复杂设置。该自动平滑算法优于市场, 多台投影在融合带的处理上过渡更加自然。



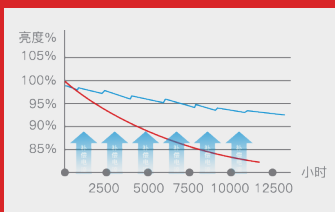
Built in edge fusion function

Built in pure hardware fusion, the fusion band width can be adjusted from 0% to 50%, and fusion can be set on all four sides, including the top, bottom, left, and right. After the width of the fusion band is set, the screen will undergo an automatic smoothing algorithm, without the need for complex settings on the gamma curve. This automatic smoothing algorithm is superior to the market, and the transition between multiple projections on the fusion band is more natural.

支持亮度低衰减恒亮模式

Supports low brightness attenuation and constant brightness mode

投影支持亮度低衰减模式。该模式下投影机的衰减曲线更加平缓, 在相同时间内, 投影的亮度色彩变化更小, 画面效果更加恒定。



Projection supports low brightness attenuation mode. In this mode, the attenuation curve of the projector is smoother, and within the same time, the brightness and color changes of the projection are smaller, resulting in a more constant visual effect.

支持主动3D和被动3D

Supports active and passive 3D

产品支持DLP LINK 主动3D, 支持常见的左右格式、上下格式、帧顺序格式、帧封装格式等。产品支持被动3D。

支持3D WARPING功能, 即投影在做了网格后画面形变情况下, 依然支持主动3D。

支持BLENDING 3D功能, 即投影在4台融合情况下, 可以通过3D SYNC接口实现3D同步, 确保多台融合的画面, 在左右眼切换时时同步的。

The product supports DLP Link active 3D, supporting common left and right formats, up and down formats, frame order formats, frame packaging formats, etc.

The product supports passive 3D.

Supports 3D Warping function, which means active 3D is still supported even when the image is deformed after being projected onto a grid.

Support Blending 3D function, which means that when projecting on 4 fused cameras, 3D synchronization can be achieved through the 3D sync interface, ensuring that the fused images of multiple cameras are synchronized when switching between left and right eyes.



创造世界一流的民族品牌

Create a world-class national brand



— 400 - 600 - 6770 —

DHN building 107, No. 1, fortune world headquarters, 2338

Duhui Road, Minhang District, Shanghai

上海市闵行区都会路2338号财富天地总部一号107幢

— www.dhn-int.com —

迪恒技术股份有限公司
DIHENG Technology Co., Ltd.