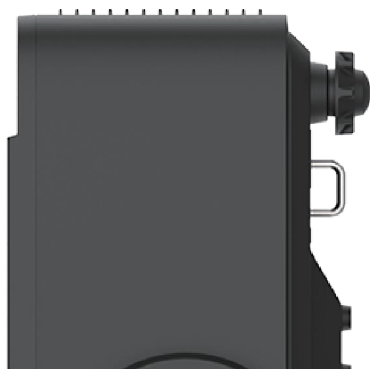


迪恒
股份

SH-DU7600

LASER PROJECTOR

海王星系列激光工程投影机



Product parameters

产品参数

海王星系列SH-DU7600程激光投影机

Neptune Series SH-DU7600 Laser Engineering Projector

型号(Model):	SH-DU7600	显示芯片(Display chip):	0.67”DMD
投影技术(Projection technology):	DLP	画面尺寸(Screen size):	30”~300”
分辨率(Resolution ratio):	1920*1200 (16:10)	噪音(Noise):	32decibel
光源(Light source):	MCL激光光源 (laser source)	投影角度(Projection angle):	2*360°
光源寿命(Light source lifespan):	20000 hour	扬声器(Speaker):	10W*2
亮度(Brightness):	7600 ISO流明 (lumen)	电压(Voltage):	AC100-240,50/60Hz
中心亮度(Center brightness):	7800流明 (lumen)	尺寸(Size):	480*139*376 (mm)
整机功率(Power):	405W@220VAC	重量(Weight):	12 (kg)

可更换镜头(Interchangeable Lenses): 1.22~1.53 (标镜)、0.35、0.48、0.53-0.65、0.6、0.7、0.75-1.12、0.8、0.75~0.95、0.95、0.95~1.22/1.5-3.0、1.52~2.92、2.90~5.50

镜头位移(Lens displacement): 电动 (electric) V: ±55%, H:±25%

对比度(Contrast ratio): 300000:1动态 (trends) , 5000000:1极致黑 (Ultimate Black)

几何校正(Contrast ratio): 水平垂直梯形校正, 校正点拉伸
(Horizontal and vertical trapezoidal correction, correction point stretching)

控制协议(Control protocol): PJLink / AMX / Extron / TCP / RS232

HDMI 2.0: 支持4K输入 (Supports 4K input)

HDBaseT: 可以实现10.2 Gbps的HDMI 1.4传输(包括HDCP)和100Mbps以太网
(Can achieve 10.2 Gbps HDMI 1.4 transmission (including HDCP) and 100Mbps Ethernet)

3D: 支持主动3D且带3D SYNC同步接口
(Supports active 3D with 3D SYNC synchronization interface)

输入接口(Input): HDMI1.4*1,HDMI2.0*1、3DSYN CIN*1

输出接口(Output interface): AudioOutJackX*1,3DSYN COUT*1

其它接口(Other interfaces): LAN*1,RS-232X*1,USB*1,USB-A*1

BIC 系统 (systems)

APP控制投影(Controlling Projection):	支持	更改开机画面(Customized boot screen):	支持
画面矫正(Picture Correction):	水平/垂直/点/面, 支持2*2~40*40格点;		
画面柔化(Screen Softening):	支持	边缘融合(Edge Fusion):	支持0%-100%融合区;
环幕融合(Ring Screen Fusion):	支持360°融合	色差调节(Chromatic aberration adjustment):	支持
开窗功能(window function):	支持窗口位置和大小精确定义、支持开多窗, 支持跨屏		
遮罩功能(Mask function):	遮边、遮罩支持跨屏;	设备锁定(Device Lock):	支持定时锁定、立即锁定
飘屏功能(Floating Screen Function):	横幅/跑马灯	智能遥控(telecontrol):	支持手机app智能遥控;
弹幕(bullet screen):	支持弹幕分享, 支持多人弹幕发送同屏显示;		
图片播放(Picture Playback):	支持		
产品监控(Product Monitoring):	支持故障预警以及故障报警		
片源商城(Source Mall):	支持手机app对接商城购买片源, 并在多机融合的画面播放片源		
播放控制(Playback control):	支持手机app进行节目编排、切换片源、切换音量		

Adopting telecentric optical architecture

采用远心光学架构

采用远心光学架构设计，相比非远心光学架构拥有更出色的色彩均匀度，亮度均匀度表现，更利于大屏融合的一致性表现。

Adopting a telecentric optical architecture design, compared to non telecentric optical architectures it has better color uniformity and brightness uniformity performance, which is more conducive to the consistency performance of large screen fusion.



大屏融合更自然

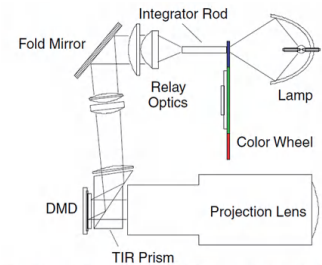
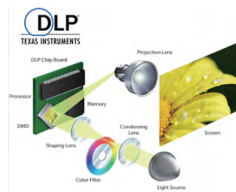


Figure 2. Generic Telecentric Optical System Components Using a TIR Prism

DLP投影技术，搭载0.67寸DMD芯片 DLP projection technology, equipped with a 0.67-inch DMD chip

选用市场更主流的DLP数字投影技术，在文字成像表现上更加清晰锐利，不存在晶格现象。搭载0.67寸大尺寸DMD，**黑色表现力、反应速度、对比度**等综合表现更加优秀。

By using the more mainstream DLP digital projection technology in the market, the text imaging performance is clearer and sharper, without any lattice phenomenon. Equipped with a 0.67-inch large-sized DMD, the black performance, reaction speed, contrast, and other comprehensive performance are even better.



WUXGA (1920*1200) 物理分辨率 1920*1200 physical resolution

物理分辨率均高达1920*1200分辨率。同时支持4K@60HZ信号输入。投影画面更加细腻，细节展示更丰富生动。

The physical resolution is as high as 1920 * 1200 resolution. Simultaneously supporting 4K@60hz Signal input. The projection screen is more delicate, and the details are displayed more vividly and richly.

配备电动镜头，镜头投射比涵盖0.35~5.5，灵活应用于各种空间

产品全系配备了电动镜头，标镜支持电动位移、电动聚焦、电动变焦。同时具备镜头位置信息的存储和载入以及镜头复位功能，全面的镜头功能优于行业水平。

该系列产品支持更换1.22~1.53 (标镜)、0.35、0.48、0.53-0.65、0.6、0.7、0.75-1.12、0.8、0.75~0.95、0.95、0.95~1.22、1.5-3.0、1.52~2.92、2.90~5.50等多款光学表现非常优秀的短焦镜头，丰富的镜头投射比覆盖，无论是狭小空间或是大空间远距离投影，均可以满足您的需求。

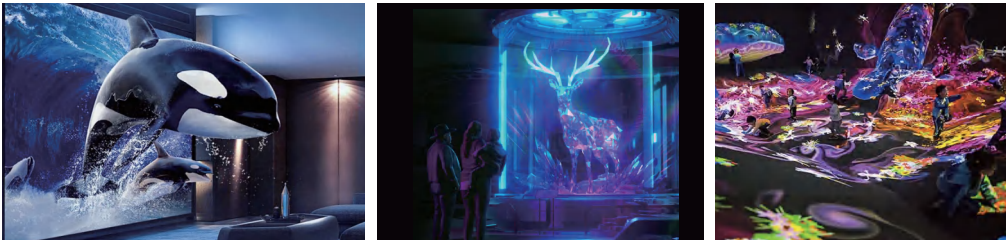
Motorized lens design, no need to disassemble the machine can be free to change the lens, the lens projection ratio covers 0.35~5.5

The whole series of products are equipped with motorized lenses, and the standard lens supports motorized shift, motorized focus, and motorized zoom. At the same time with the lens position information storage and loading and lens reset function. The comprehensive lens functions are better than the industry level.

This series of products support the replacement of 1.22~1.53 (standard lens), 0.35, 0.48, 0.53-0.65, 0.6, 0.7, 0.75-1.12, 0.8, 0.75-0.95, 0.95, 0.95~1.22, 1.5-3.0, 1.52-2.92, 2.90-5.50, etc., and other optical performance of the very excellent short focal length lenses.

主动和被动3D, 3D Warping以及Blending3D功能

Active and Passive 3D, 3D Warping and Blending3D functions



产品支持DLP LINK 主动3D, 支持常见的左右格式、上下格式、帧顺序格式、帧封装格式等。

产品支持被动3D。

支持3D WARPING功能, 即投影在做了网格后画面形变情况下, 依然支持主动3D。

支持BLENDING 3D功能, 即投影在4台融合情况下, 可以通过3D SYNC接口实现3D同步, 确保多台融合的画面, 在左右眼切换时时同步的。

The product supports DLP Link Active 3D, which supports common left/right format, top/bottom format, frame sequence format, and frame encapsulation format.

The product supports passive 3D.

Support 3D Warping function, i.e., the projection still supports active 3D in the case of deformation of the screen after making a grid.

Support Blending 3D function, i.e., the projection in the case of 4 fusion, can achieve 3D synchronization through 3D sync interface, to ensure that multiple fusion of the screen, in the left and right eye switching synchronization.

针对不同墙壁颜色, 选择不同的光输出以呈现更好效果

Select different light outputs for different wall colors for better results.

设置墙壁颜色, 以便投影机在特定墙面上达到最佳颜色效。可选项包含黑板、浅黄色、浅绿色、浅蓝色、粉红色、灰色。

Set the wall color so that the projector achieves the best color effect on a specific wall. Options include chalkboard, light yellow, light green, light blue, pink, and gray.

侦测电源开机以及侦测信号开机

Detect power on and signal on

投影机可以在菜单中设置侦测电源开机以及侦测信号开机。通过电源的通断或输入信号的存在来控制投影机的开机或关机, 在集成系统中, 这提供了更灵活的控制方案。

The projector can be set to detect power on and signal on in the menu. Controlling the power on or off of the projector through the presence or absence of input signals provides a more flexible control solution in integrated systems.

配备升级版遥控器, 遥控锁定功能更强大

Equipped with upgraded remote control

海王星配备了升级版的遥控器。几何校正、融合、画面切割、AV MUTE等功能可以一键触达。多台投影进行融合调试时可以对部分投影进行更方便的遥控锁定, 功能更强大。

The product is equipped with an upgraded remote control. Geometric correction, fusion, screen cut, AV mute and other functions can be reached with one touch. When multiple projections are fused for debugging you can lock the remote control on some of them more conveniently and with more powerful functions.

标配RJ45、RS232接口, 支持多种控制方式

Standard RJ45、RS232 interfaces multiple control methods

产品标配了RJ45、RS232接口, 支持IR遥控、按键板控制、网口、串口等多种控制方式和控制协议。

The product comes standard with RJ45 and RS232 interfaces, supporting various control methods and protocols such as IR remote control, button board control, network port, serial port, etc.

支持双信号输入开窗或并排显示

Supports dual signal input windowing or side by side display

产品支持多个输入信号, 支持2个信号以开窗方式显示或以并排方式显示。

The product supports multiple input signals and supports the display of two signals in a windowed or side by side manner.

丰富的图像模式 Rich image modes

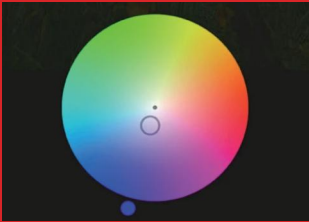
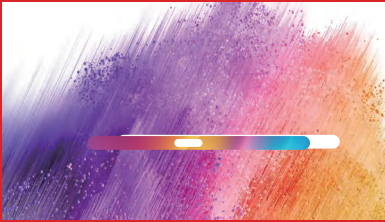
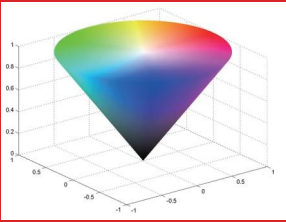
设备内置了演示、动态、HDR、DICOM、融合、用户等丰富的图像模式。

演示模式提供了色彩与亮度更加平衡的投影效果；动态模式提供了亮度更高的投影效果；HDR模式提供了对比度更高的投影效果；DICOM模式为医学专用模式，该模式下放射图像的细节展示更加清晰；融合模式下多台投影之间的色彩差异更小；用户模式打开后，用户可以对投影的亮度饱和度等进行更加精细的调节。

The device is equipped with rich image modes such as demonstration, dynamic, HDR, DICOM, fusion, and user.

The demonstration mode provides a more balanced projection effect between color and brightness; Dynamic mode provides a higher brightness projection effect; HDR mode provides a higher contrast projection effect; DICOM mode is a medical specific mode, in which the details of radiological images are displayed more clearly; The color difference between multiple projectors in fusion mode is smaller; After opening the user mode, users can make more precise adjustments to the brightness saturation of the projection.

HSG七色独立调节功能 HSG seven color independent adjustment function



内置拼接融合模式，快速缩小多台之间的色彩差异。细微的亮度差异货色彩差异可以通过该功能做进一步精细调节，以使多台投影机之前色彩更进接近。

The seven-color independent adjustment function and built-in splicing and fusion mode can quickly reduce the color difference between multiple sets. Subtle Brightness difference and color difference can be further adjusted through this function to make multiple projectors Color closer



Brain in Cloud 智能云脑

通过云端服务器“大脑”与各个投影机节点连接，在大脑中实现片源商城购买、画面分割、故障信息分析与处理、远程控制等。采用OpenGL打造的图像算法，采用先进的分布式架构，兼具融合、开窗、横幅、娱乐等众多功能

Brain in Cloudn

By connecting to various projector nodes through the cloud server "brain", it can achieve film source shopping image segmentation, fault information analysis and processing, remote control, etc. in the brain. The image algorithm created using OpenGL adopts advanced distributed architecture, which combines many functions such as fusion, windowing, banners, entertainment, etc

数据统计功能, 为经营者决策提供依据

可查看出货数据，了解不同客户的出货情况及目标出货达成率，方便对公司级客户的运营维护及时作出调整及决策依据。



Statistical data function to provide a basis for operators to make decisions

Shipping data can be viewed to understand the shipments of different customers and target shipment achievement rate, to facilitate the operation and maintenance of company-level customers to make timely adjustments and decision-making basis.

支持跨屏遮罩功能 Support for cross-screen masking



支持遮罩功能, 投影不仅可以呈现矩形画面、弧形画面, 也可以投影一朵花的形状、一本书的形状、一页剪纸的形状等。在艺术空间里结合创意内容, 可以呈现意想不到的创意美感, 同时支持跨融合带遮罩, 可通过手机APP直接操作切换。

Supporting the masking function, the projection can not only present a rectangular screen and arc screen, but also project the shape of a flower, the shape of a book, the shape of a page of paper cuttings and so on. Combined with creative content in the art space, it can present unexpected creative aesthetics, and it also supports cross-fusion with masking, which can be switched by direct operation via cell phone APP.

手机APP修改开机画面功能 Mobile App Modify Boot Screen Function

开机画面支持手机一键修改, 及自定义上传开机画面, 享你所想, 用你所用。
The boot screen supports one-click modification of the phone and customized uploading of the boot screen. Enjoy what you want, use what you want.

投影智能管理排程 Projection Intelligent Management Scheduling

可通过手机对投影进行排程设定, 定时管理开关机, 实现投影的自动运转, 省去人工开关机的烦恼, 更加智能及节能。
You can set the schedule for the projection through cell phone and manage the switch on and off at regular intervals to realize the automatic operation of the projection, eliminating the trouble of switching on and off manually, which is more intelligent and energy-saving.

支持横幅及跑马灯功能 Support banner and running light function

支持自定义横幅及跑马灯功能, 可对横幅及跑马灯的内容, 位置, 大小, 背景字体颜色等进行自定义调节, 领导来访, 重要通知, 均可通过横幅功能突出显示或跑马灯功能滚动显示。

Two examples of banner and running light functions. The top image shows a banner with the text '热烈欢迎上海市领导到迪恒指导工作' (Warmly welcome Shanghai leaders to Diheng for guidance work) against a background of a large sphere and mountains. The bottom image shows a similar background with a running light effect.

遥控以及OSD菜单功能映射 Remote control and OSD menu function mapping

App内嵌虚拟遥控器, 手机即是遥控器。常规按键一键触达。同时投影机的菜单也被映射在app中。通过更加人性化的方式呈现在用户面前。用户在单机用多机融合使用场景里, 不用在投影遥控器、融合调试软件之间频繁切换, 通过一个app即可简单实现所有的操作, 进而有更快的调试时效。

App embedded virtual remote control, the phone is the remote control. Regular buttons are one touch away. Meanwhile the menu of the projector is also mapped in the app. Through a more humanized way to present in front of the user. Users do not need to switch frequently between the projector remote control and the fusion debugging software in the single-camera and multi-camera fusion scenarios, but can simply realize all the operations through an app, which leads to a faster debugging time.

创造世界一流的民族品牌

Create a world-class national brand



— 400 - 600 - 6770 —

DHN building 107, No. 1, fortune world headquarters, 2338
Duhui Road, Minhang District, Shanghai
上海市闵行区都会路2338号财富天地总部一号107幢

— www.dhn-int.com —

迪恒技术股份有限公司
DIHENG Technology Co., Ltd.