

迪恒  
股份

**DK6200**

# LASER PROJECTOR

火星系列4K激光工程投影机



# Product parameters

## 产品参数

### 火星4K系列DK6200工程激光投影机

Mars 4K series DK6200 Laser Engineering Projector

型号(Model): DK6200	均匀度(Uniformity): 80%
投影技术(Projection technology): DLP	色域(Color gamut): 92% REC.709
分辨率(Resolution ratio): 4K UHD (3840 *2160)	中心亮度(Center brightness): 6250流明
ISO亮度(ISO brightness): 6200 ISO流明	
宽高比(Aspect ratio): 16:9 (兼容全屏, 16:10, 16:9, 4:3, 21:9)	
图像模式(Image mode): 明亮/演示/釉上彩/sRGB /视频/DICOM /融合/用户 Bright / Demo / Glaze / sRGB / Video / DICOM / Fusion / User	
显示技术(display technique ): 蓝色激光+荧光技术 Blue laser+fluorescence technology	
光源寿命(Light source lifespan): 标准20000小时; 节能25000小时 Standard 20000 hours; Energy saving 25000 hours	
镜头类型(Lens type): 手动镜头 Manual lens	
镜头投射比(Lens projection ratio): 1.6X, 1.36-2.18 (WIDE 95" @ 2.85M)	
镜头位移(Lens displacement): 水平位移±23%, 垂直位移±55%	
选配镜头(Optional lens): 0.81-0.89, 0.5, 0.7, 0.7-0.9, 1.0-1.69, 1.75-2.75	
输入接口(Input interface): HDMI 2.0(2.0b / HDCP 2.2) * 2、Display Port*1 (1.2a)、3D VESA in *1	
输出接口(Output interface): Audio out *1、12v trigger *1、S/PDIF * 1(support 2.0 / 5.1channel)、3D VESA out *1	
控制接口(control interface ): USB-A、RS232、LAN、Wired Remote in 、Wired Remote out	
电源规格(Power specifications): AC 100~240 V, 50/60 HZ	
整机功率(Whole machine power): (110V) 425W	
HDTV/UHD兼容性: 480i、480p、576i、576p、720p、1080i、1080p、2160p	
1080p 120Hz高刷: 支持support	
1080p 240Hz高刷: 支持support	
机器尺寸 (Machine dimensions): 405(W)x330(L)X143(H)	
机器重量 (Machine weight): 7kg	

# 4K UHD resolution

物理分辨率达4K UHD分辨率



3840\*2160  
830万像素

物理分辨率达3840x2160@60Hz分辨率，高达830万显示像素。相比2K投影机能够显示更多的细节，呈现更加清晰的效果。

Physical resolution reaches 3840x2160@60Hz Resolution, up to 8.3 million display pixels. Compared to 2K projectors, they can display more details and present clearer effects.

## 采用远心光学架构 Adopting telecentric optical architecture

采用远心光学架构设计，相比非远心光学架构拥有更出色的色彩均匀度，亮度均匀度表现，更利于大屏融合的一致性表现。



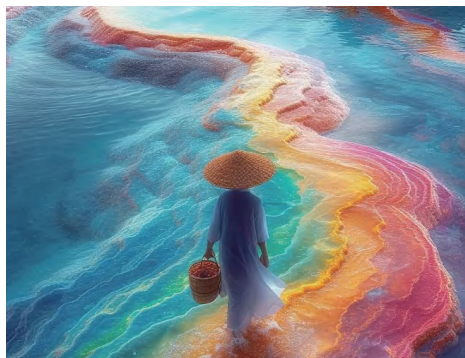
色彩均匀度  
Color Uniformity



亮度均匀度≥80%  
Luminance uniformity

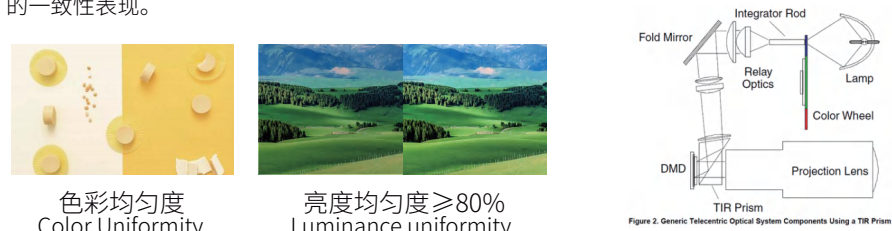
Adopting a telecentric optical architecture design, compared to non telecentric optical architectures, it has better color uniformity and brightness uniformity performance, which is more conducive to the consistency performance of large screen fusion.

## HSG 色彩调整 HSG color adjustment



内置了强大的HSG功能，用户可以对红色、绿色、蓝色、青色、洋红色、黄色的色相、亮度、饱和度进行精细的调节，对白色光的RGB三原色进行精细调节。

Equipped with powerful HSG function, users can finely adjust the hue, brightness, and saturation of red, green, blue, cyan, magenta, and yellow, as well as the RGB primary colors of white light.



## 支持六向梯形校正 Support six directional trapezoidal correction

支持4角拉伸以及水平垂直梯形校正，支持垂直方向上的自动梯形校正，可以快速将画面校正为方正矩形。

Supports 4-angle stretching and horizontal and vertical trapezoidal correction, as well as automatic trapezoidal correction in the vertical direction. Can quickly correct the image to a square rectangle.

### 支持主动3D和被动3D投影

支持以DLP LINK以及3D VESA两种方式实现3D同步。

支持常见的帧顺序、帧封装、上下、左右格式的3D解析。

配备3D VESA IN&OUT接口，支持多台投影机融合后的3D同步。

支持被动3D投影。



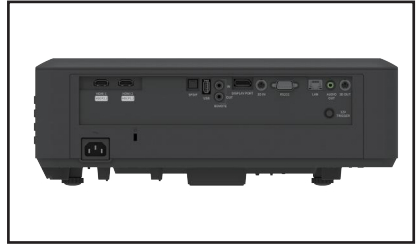
### Supports active 3D and passive 3D projection

Supports 3D synchronization through DLP Link and 3D Vesa. Supports common 3D parsing of frame order, frame encapsulation, up and down, left and right formats. Equipped with a 3D Vesa in&out interface, supporting 3D synchronization after fusion of multiple projectors. Supports passive 3D projection

### 配备HDMI 2.0以及DP接口 Equipped with HDMI 2.0 and DP interface

配备2个HDMI 2.0以及1个DP接口，支持3840\*2160@60HZ超高清输入，HDMI2.0接口支持HDCP2.2协议。

Equipped with 2 HDMI 2.0 and 1 DP interface, supporting 3840\* 2160@60Hz Ultra high definition input. The HDMI2.0 interface supports the HDCP2.2 protocol.



### 120HZ/240HZ高刷新率 120Hz/240Hz high refresh rate

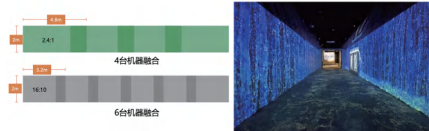
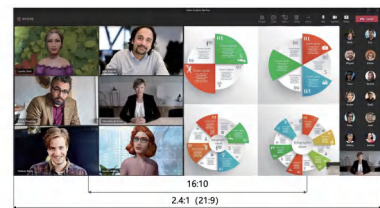
支持1080P@120Hz以及1080P@240Hz高刷新率，在观看体育赛事或动作电影相比较60Hz刷新率能够呈现更加流畅的观影效果。

support 1080P@120Hz as well as 1080P@240Hz High refresh rate, compared to watching sports events or action movies, 60Hz refresh rate can present a smoother viewing effect.

### 具备21:9独特宽高比 Featuring a unique 21:9 aspect ratio

支持将画面宽高比调整至21:9，相比较默认的16:9, 16:10 宽高比，在相同高度时宽度能够投影更多的面积在沉浸式融合场景下需要更少的投影机就可以铺满画面。

Support adjusting the aspect ratio of the screen to 21:9 Compared to the default 16:9 and 16:10 aspect ratios, the width can project more area at the same height. In immersive fusion scenes, fewer projectors are needed to fill the screen.



### 可换镜头设计。 Interchangeable lens design

标配1.36-2.18投射比镜头,可更换0.81-0.89, 0.5, 0.7, 0.7-0.9, 1.0-1.69, 1.75-2.75 满足不同空间投影机的安装摆放。

Standard 1.36-2.18 projection ratio lens, interchangeable with 0.81-0.89, 0.5, 0.7, 0.7-0.9, 1.0-1.69, 1.75-2.75 lenses. Meet the installation and placement of projectors in different

# 创造世界一流的民族品牌

Create a world-class national brand



— 400 - 600 - 6770 —

DHN building 107, No. 1, fortune world headquarters, 2338  
Duhui Road, Minhang District, Shanghai  
上海市闵行区都会路2338号财富天地总部一号107幢

— [www.dhn-int.com](http://www.dhn-int.com) —

迪恒技术股份有限公司  
DIHENG Technology Co., Ltd.